

MOTOR DRIVEN



QUAD 4000 SERIES PUMPS | FOR INTERNATIONAL & US MARKETS

ITT Flojet developed the quad pumps to deliver higher flows up to 19 LPM using a four-piston design with excellent self-priming capability.



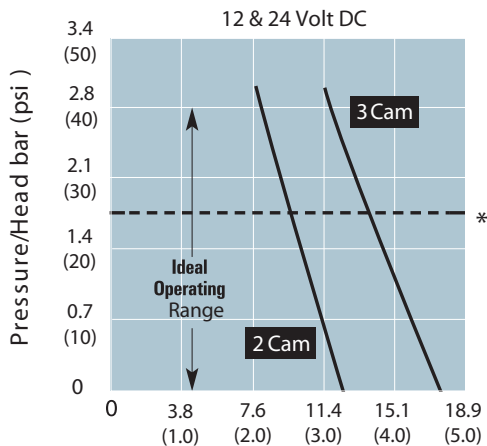
FEATURES

- Built-in pressure switch automatically starts and stops pump instantaneously when discharge valve opens and closes
- Compact design and plug-in port fittings make installation easy
- Can run dry without damage and handle liquids up to 54° C (130° F)
- No metal contact with liquid being pumped
- Ball bearing drive throughout pump and motor assures longer pump life
- Excellent self-priming capability. Pump may be located above the liquid level
- Powerful, permanent magnet motor with low current draw and long life brushes

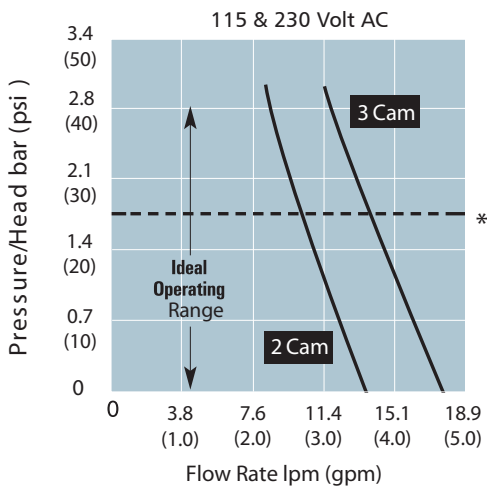
SPECIFICATIONS

Flow Rate	13.2 and 18.9 L/min (3.5 to 5.0 GPM) Nominal
Pump Design	Diaphragm
Motor	TEFC/TENV Permanent Magnet Motor
Voltage	12 & 24 Volt DC, 115 & 230 Volt AC
Cycle	50/60 hertz for AC Models
Current	1.5 amp max. (115 V)
Pressure Switch Setting	3.2 bar (45 PSI) cut out
Maximum Operating Pressure	2.8 bar (40 PSI)
Self-Priming	2.4 mm (Up to 8 ft) Vertical Height
Ports *	Plug-In Ports 1/2" (12.7mm) or 3/4" (19mm) Hose Barb Standard
Wetted Parts	Housing Modified Polypropylene - Standard, Elastomers Santoprene® and Buna - Standard
Net Weight	2 kg (4 lbs)

PERFORMANCE



* Continuous Duty Max Pressure For No Switch 3 Cam Models.



* Continuous Duty Max Pressure For No Switch 3 Cam Models.

*Consult your local ITT Flojet representative for other type of Port Fittings

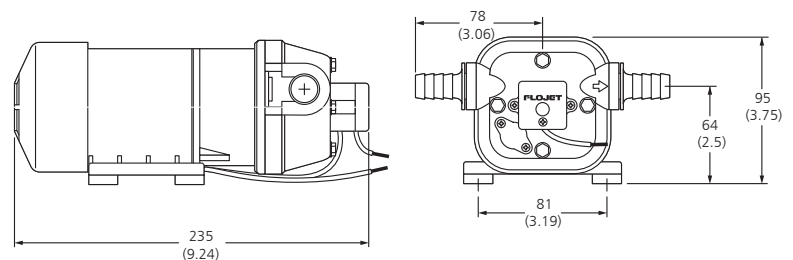
4300 and I series: INST. SHEET # 81000-084

4100 series: INST. SHEET # 81000-176

AC VSD: INST. SHEET # 81000-388

DIMENSIONAL DRAWING

UNLESS OTHERWISE STATED DIMENSIONS IN [] ARE IN MM.



QUAD 4000 SERIES PUMPS | FOR INTERNATIONAL & US MARKETS

MODELS

MODEL #S	VOLTAGE	SWITCH BAR (PSI)	DIAPHRAGM	CHECK VALVE	OPEN FLOW LPM (GPM)	FITTINGS	COMMENTS
R4100143	12V	no	Santoprene	EPDM	19.0 (5.0)	3/4" HB ST	
R4100507	12V	no	Santoprene	Silicon	19.0 (5.0)	3/4" HB ST	Silicon Check Valve
R4300142	12V	3.1 (45)	Santoprene	EPDM	14.0 (3.7)	1/2" HB ST	
R4300143	12V	3.1 (45)	Santoprene	EPDM	19.0 (5.0)	3/4" HB ST	
R4300500	12V	3.1 (45)	Santoprene	VITON	14.0 (3.7)	1/2" HB ST	
R4300504	12V	3.1 (45)	Santoprene	VITON	19.0 (5.0)	3/4" HB ST	
R4300506	12V	3.1 (45)	Geolast	BUNA	19.0 (5.0)	3/4" HB ST	
R4300507	12V	3.1 (45)	Santoprene	Silicon	19.0 (5.0)	3/4" HB ST	Silicon Check Valve
R4300521	12V	2.4 (35)	Santoprene	EPDM	19.0 (5.0)	3/4" HB ST	Stainless Steel Screws
R4100343	24V	no	Santoprene	EPDM	19.0 (5.0)	3/4" HB ST	
R4300342	24V	3.1 (45)	Santoprene	EPDM	14.0 (3.7)	1/2" HB ST	
R4300343	24V	3.1 (45)	Santoprene	EPDM	19.0 (5.0)	3/4" HB ST	
R4300522	24V	2.4 (35)	Santoprene	EPDM	19.0 (5.0)	3/4" HB ST	Stainless Steel Screws
R4300537	24V	3.1 (45)	Geolast	Buna	19.0 (5.0)	3/4" HB ST	
R4100501	115VAC	no	Santoprene	EPDM	14.0 (3.7)	1/2" HB ST	
R4300501	115VAC	3.1 (45)	Santoprene	VITON	14.0 (3.7)	1/2" HB ST	
R4120243	230VAC	no	Santoprene	EPDM	19.0 (5.0)	3/4" HB ST	Stainless Steel Screws
R4300242	230VAC	2.1 (30)	Santoprene	EPDM	14.0 (3.7)	1/2" HB ST	
R4300503	230VAC	2.1 (30)	Santoprene	VITON	14.0 (3.7)	1/2" HB ST	
R4300538	230VAC	2.4 (35)	Santoprene	EPDM	17.0 (4.5)	3/4" HB ST + 1/2" HB ELB	Induction motor/Continuous Duty
R4300539	230VAC	2.4 (35)	Santoprene	EPDM	13.0 (3.5)	3/4" HB ST + 1/2" HB ELB	Induction motor/Continuous Duty
R4300540	230VAC	2.4 (35)	Santoprene	Silicon	17.0 (4.5)	3/4" HB ST + 1/2" HB ELB	Induction motor/Continuous Duty