



**CIŚNIENIOWY
OPRYSKIWACZ RĘCZNY**

**AIR-COMPRESSED
SPRAYER**

**РУЧНОЙ ПОМПОВЫЙ
ОПРЫСКИВАТЕЛЬ**

INSTRUKCJA OBSŁUGI

OWNER MANUAL • ИНСТРУКЦИЯ ПО ЭКСПЛУАТАЦИИ

**MASTER 1500 PLUS / VITON
MASTER 2000 PLUS / VITON**

052/P/05/05/2019A

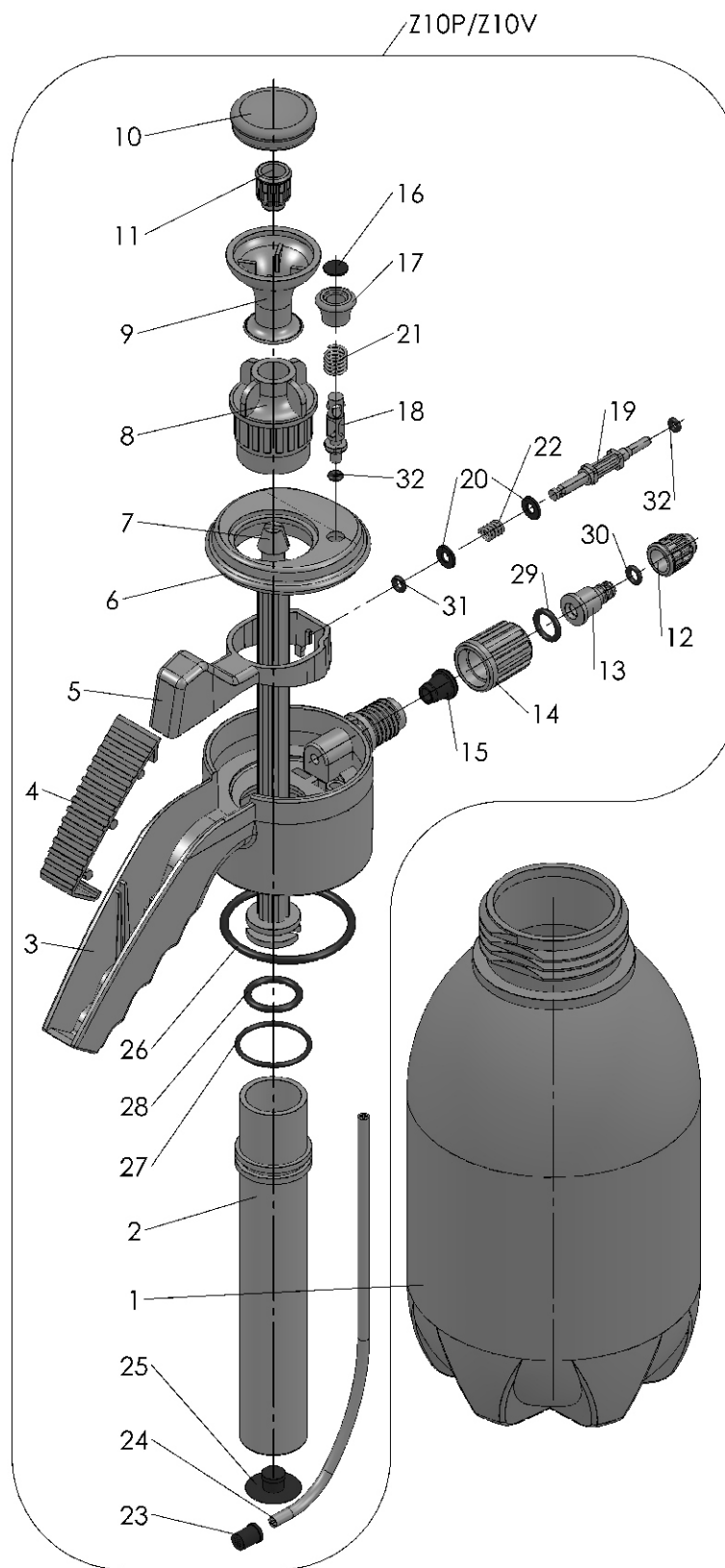
**KARTA GWARANCYJNA
GUARANTEE CARD
ГАРАНТИЙНЫЙ ТАЛОН**



pieczęć sprzedawcy i data
stamp of the retailer and the date
дата и печать продавца

data naprawy date of the repair дата ремонта	opis wady description of the fault описание дефектов

Główka do Master Plus / Master Viton Sprayer head for Master Plus / Master Viton Головка для Master Plus / Master Viton		Z10P / Z10V
1	Zbiornik 1,5 l / 2,0 l Tank 1,5 l / 2,0 l / Бачок 1,5 л / 2,0 л	M310a / M310b
2	Cylinder pompy Pump's cylinder / Цилиндр насоса	M301a
3	Korpus Sprayer head's body / Корпус	M301
4	Nakładka Handle cover plate / Накладка	M314
5	Przycisk zaworu Feeding valve button / Кнопка клапана	M304
6	Pokrywa Sprayer head's lid / Крышка	M302
7	Tłoczek pompy Pump's piston / Поршень насоса	M305
8	Prowadnica Piston's guide / Направляющая	M303
9	Uchwyt tłoczyska Piston's handle / Рукоятка поршня	M307
10	Kapturek Piston's handle cap / Колпачок	M306
11	Nakrętka dyszy MR1.0 MR1.0 nozzle nut / Гайка форсунки MR1.0	R115_1.0
12	Nakrętka dyszy MR1.5 MR1.5 nozzle nut / Гайка форсунки MR1.5	R115_1.5
13	Rdzeń dyszy Nozzle core / Стержень форсунки	R114
14	Nakrętka dyszy Nozzle nut / Гайка форсунки	R64
15	Tulejka zaworu Valve's bushing / Втулка клапана	M312
16	Zaślepka Plug / Затычка	M315
17	Zawór bezpieczeństwa – uchwyt Safety valve – handle / Ручка предохранительного клапана	R100
18	Zawór bezpieczeństwa – popychacz Safety valve – shank / Стержень предохранительного клапана	R98
19	Suwak zaworu Feeding valve's piston / Движок клапана	M311
20	Podkładka 5,3x10 Pad 5,3x10 / Подкладка 5,3x10	M313
21	Sprężynka Spring / Пружинка	R13n
22	Sprężynka Spring / Пружинка	M316
23	Filtretek Filter / Фильтр	M308
24	Rurka zasysająca Sucking pipe / Трубка засасывающая жидкость	M309
25	Grzybek gumowy Pump rubber valve-cap / Запорный клапан насоса	R24 / R24V
26	O-ring 53x3,5	R18
27	O-ring 27x2	R29
28	O-ring 19x3,5	R25
29	O-ring 11,3x2,4	R47c / R47cV
30	O-ring 5,3x2	R116 / R116V
31	O-ring 4x2	R57 / R57V
32	O-ring 3x2	R42 / R42V



AIR-COMPRESSED SPRAYER

MASTER 1500 PLUS / VITON

MASTER 2000 PLUS / VITON

I. TECHNICAL DATA

Model	Master 1500 PLUS Master 1500 VITON	Master 2000 PLUS Master 2000 VITON
code	PM1500P PM1500V	PM2000P PM2000V
total capacity	1600 ml	2100 ml
working capacity	1500 ml	2000 ml
average liquid output	0,4 liter/min	
max working pressure.	0,4 MPa (4 bar) (60 PSI)	
overpressure protection	safety valve R03dm	
container diameter	130 mm	
sprayer height	310 mm	340 mm
net weight	0,48 kg	0,52 kg
container material	polypropylene	

2. EQUIPMENT

1. Complete sprayer of 1,5 l or 2,0 l volume
2. Additional nozzle MR1.0 (inside the pump handle under the cover).
3. User's manual with the guarantee card.

The sprayer available with rubber NBR seals (Master Plus) or VITON seals (Master Viton).

3. APPLICATION OF THE SPRAYER


1.5 l and 2.0 l sprayers are comfortable, light and durable devices, ideal for small nurturing and protection treatments on plants in the house and the garden.

The sprayers with the VITON sealings are designed for more aggressive chemicals and detergents used in industry, garages, factories, car-wash. These devices can also be used for disinfection and pest control.

4. PREPARATION AND USAGE

1. **Before unscrewing the head make sure that the sprayer is not under pressure by pulling the safety valve up.**
2. Prepare the chemical agent according to the recommendations on its packing and pour it, using a sieve, into the container up to the level indicated on the scale.
3. After filling the container with the liquid, screwing in the head and pumping it up, the sprayer is ready for work.
4. The safety valve opens automatically when the pressure gets higher than the maximum recommended value. **Caution! When the safety valve opens and releases the excess air the liquid can also get out.**
5. The gush of the liquid follows the pressing of the pump trigger
6. The stream of the liquid can be regulated by turning the nozzle end
7. Whenever necessary the pressure should be increased by further pumping.

5. WORK SAFETY REGULATIONS

1. Children, pregnant women, people taking medicines or other drugs restricting the concentration powers or drinking alcohol are forbidden to operate the sprayer.
2. Before first spraying check the sprayer's action using clean water.
3. **When working with chemicals (also during liquid preparation and destroying the packages) it is necessary to wear protective clothing (rubber boots, gloves, a coat, a cap and a mask).**
4. It's forbidden to work with chemicals on an empty stomach and eat or drink during working. It's forbidden to drink alcohol one day before and one day after working with chemicals.
5. It's forbidden to pour the liquid remains to the open water reservoirs or biological sewage treatment plants. These notes apply also to the water after cleansing the container and other parts of the sprayer.
6. Expendable sprayer should be handed over for utilization.
7. In case of poisoning the doctor must be contacted.
8. People working using the sprayer should strictly comply to all the recommendations on the package of the spraying agents.
9. It's forbidden to work using leaky or disabled sprayer.
10. All the operations should be done after decompression of the sprayer.
11. Thoroughly cleanse the sprayer after each using and before servicing.
12. It's forbidden to use the sprayer for other purposes than stipulated in the owner manual.
13. The sprayer must be stored clean and in winter season it is essential to check, that there is no liquid left in the container.
14. **The only device for making the working pressure is a pump placed inside the container – it's forbidden to use any other devices for this purpose!** 
15. It's forbidden to spray with liquids warmer than +40 °C, and with easy inflammable chemicals or substances which can cause an explosion e.g. petrol, solvents.
16. Changes in the sprayer or using it not according to its allocation can result in poisoning people or animals, polluting the environment, damaging the sprayer or serious accidents.
17. After finishing work, you should change your clothes (the protective clothes must be cleaned), wash your hands, face, mouth and throat, and clean your nose.
18. After finishing spraying, water down the remaining liquid at least 10 times and spray it on the same area or plant again.
19. After finishing work, rinse the sprayer using clean water.
20. The user is fully responsible for the damages caused by not complying with these recommendations.
21. The sprayer must be stored empty and non-pressurized.
22. It is forbidden to block the safety valve or make any unauthorized changes in the sprayers as it may cause damages or injury.
23. After the compression the container must not be hit or dropped.
24. **Before commencing work the safety valve must be checked by pulling the valve out.** The valve should move in and out easily.
25. It's forbidden to point the nozzles of the sprayer and spraying the liquid in the direction of the face.
26. The sprayer while working and storing should be secured from any unauthorized people, especially children.



The sprayer once used for plant protection chemicals, can not be used for other purposes!




6. SERVICE AND WARRANTY REPAIRS

1. The guarantee period is 24 months from the date of purchase.
2. Sprayers with chemical remains will not be repaired.
3. Reclamation should be lodged to the seller of the sprayer.
4. The claims will be accepted after showing the defected part or giving the full description of the fault.
5. Number of repairs after which the seller can't refuse to exchange the sprayer for a new one (in case there are still defects) is 3.
6. Operations connected with exploitation of the sprayer and described in the manual are not treated as guarantee repairs.
7. The producer won't accept the claim if there were changes in pressure regulation or the storing, operating, maintaining of the product were not according to the manual.
8. Mechanical damages caused by the user can't be the subject of reclamation. The damaged parts can be exchanged but the costs are charged.
9. The guarantee repairs should be made using always the genuine Marolex parts.

7. MAINTENANCE AND SERVICE RECOMMENDATIONS

1. In winter the sprayer should be stored empty unless the place is heated.
2. After finishing work the sprayer should be dismantled and thoroughly washed.

8. SAFETY SIGNS

lp.	sign	meaning	place
1.		tablet	on container
2.		Sign indicating possibility of unspecified danger.	on container
3.		Sign indicating that a users manual should be read before starting work.	on container
4.		Sign indicating danger of poisoning. Eating or drinking while using the device is forbidden.	on container

Manufacturer:

MAROLEX Sp. z o.o.
ul.Reymonta 2
05-092 Dziekanów Leśny
www.MAROLEX.pl

Distributor: