

Polypropylene Bolted Ball Valves

FEATURES

- FKM (viton type) seals.
- Precision molded polypropylene is reinforced with fiberglass for additional strength.
- Self-aligning ball moves freely against the PTFE seats for smooth operation. The valve opens and closes with very little pressure on the handle.
- Ball is diamond turned, after molding, to make it spherically perfect, which provides precise contact between ball and seats.
- PTFE self-lubricating stem bushings and seats cannot stick or bind.
- Stainless steel bolts.

4 BOLT VALVES

PART NO	DESCRIPTION	MAX PSI	PIPE SIZE	OPENING THRU BALL	QTY
V050	1/2" Full Port Valve	150	1/2"	3/4"	24/box
V075	3/4" Full Port Valve	150	3/4"	3/4"	24/box
V100	1" Standard Port Valve	150	1"	3/4"	24/box
V100FP	1" Full Port Valve	150	1"	1"	24/box
V125	1 1/4" Standard Port Valve	150	1 1/4"	1"	24/box
V125FP	1 1/4" Full Port Valve	150	1 1/4"	1 1/2"	24/box
V150	1 1/2" Full Port Valve	150	1 1/2"	1 1/2"	24/box
V200	2" Standard Port Valve	150	2"	1 1/2"	24/box

FEATURES FOR LOCKING DEVICE

- 304 Stainless steel construction.
- Installs under valve handle.
- Comes complete with handle and locking device.
- Padlock not included*

LOCKING DEVICE

PART NO	DESCRIPTION	VALVE USED	QTY
VL20153*	Locking Device	V125FP, V150 & V200	1

FEATURES FOR MOUNTING BRACKETS

- 316 Stainless steel construction.
- Straight and 90° available.

MOUNTING BRACKETS

PART NO	DESCRIPTION	VALVE USED	QTY
V10270	Straight Mounting Bracket	V100FP & V125	1
V10271	90° Mounting Bracket	V100FP & V125	1
V25270	Straight Mounting Bracket	V150 & V200	1
V25271	90° Mounting Bracket	V150 & V200	1

FEATURES FOR REMOVABLE HANDLE KIT

- Removable handle deters opening the valve for safety, vandalism and theft.

REMOVABLE HANDLE KIT

PART NO	DESCRIPTION	VALVE USED	QTY
VRH200K	Removable Handle Kit	V125FP, V150 & V200	1

FEATURES FOR HANDLE RISERS

- Allows extra clearance between handle and body for tight spaces.

HANDLE RISERS

PART NO	DESCRIPTION	VALVE USED	QTY	PRICE
V10153138BL	1" x 1 3/8" Handle Offset	V075BL & V100BL	1	
V10153138	1" x 1 3/8" Handle Offset	V100FP, V125, V075SL & V100SL	1	
V20153138BL	2" x 1 3/8" Handle Offset	V125BL & V150BL	1	
V20153138	2" x 1 3/8" Handle Offset	V125FP, V150, V200, V125SL, V150SL	1	
V25153138BL	2" FP x 1 3/8" Handle Offset	MV200BL, MV220BL & MV300BL	1	
V25153138	2" FP x 1 3/8" Handle Offset	V200FP & V200SL	1	



VL20153



V10271



V10270



V25270



V25271



VRH200K

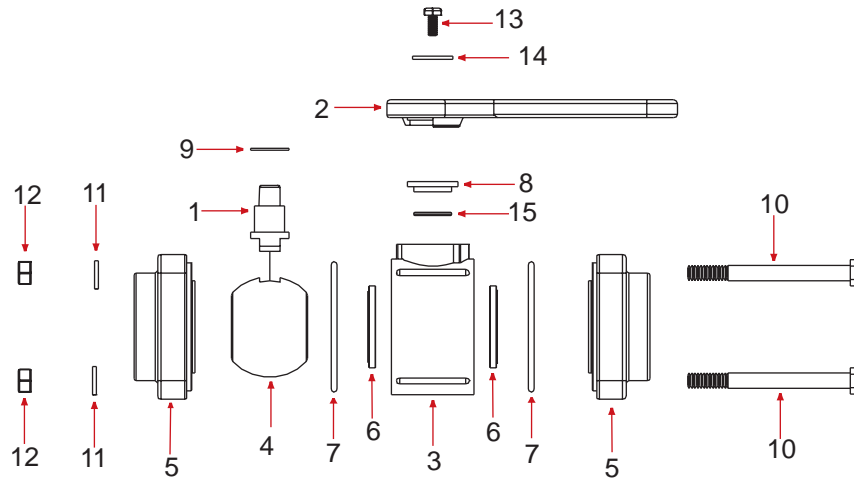
NEW

3 Piece Kit



HANDLE RISER

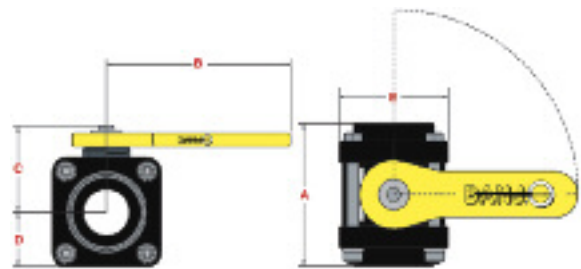




REPLACEMENT PARTS V050-V075-V100				
ITEM	PART NO	DESCRIPTION	QTY	
1	V07151A	Stem	1	
2	V10153A	Handle	1	
3	V07254	Valve Body	1	
4	V07155*	Valve Ball	1	
5	V05256	1/2" End Plate	2	
5	V07257	3/4" End Plate	2	
5	V07256	1" End Plate	2	
6	V07258A*	Ball Seat	2	
7	V07264*	FKM (viton type) Valve Body O-Ring	2	
8	V07159*	Upper Stem Bushing	1	
9	V07060*	Thrust Washer	1	
10	V07017	1/4" x 3" SS Body Bolt	4	
11	V07018	1/4" SS Lock Washer	4	
12	V07019	1/4" SS Nut	4	
13	V10020A	#10 x 3/4" SS Handle Bolt	1	
14	V07021A	SS Handle Washer	1	
15	V07163*	FKM (viton type) Stem O-Ring	1	
N/S	V07200	Repair Kit	1	

REPLACEMENT PARTS V100FP-V125				
ITEM	PART NO	DESCRIPTION	QTY	
1	V10151A	Stem	1	
2	V10153A	Handle	1	
3	V10254	Valve Body	1	
4	V10155*	Valve Ball	1	
5	V10257	1" Full Port End Plate	2	
5	V10256	1 1/4" End Plate	2	
6	V10258A*	Ball Seat	2	
7	V10264	FKM (viton type) Valve Body O-Ring	2	
8	V10159*	Upper Stem Bushing	1	
9	V10060*	Thrust Washer	1	
10	V10117	5/16" x 3 1/2" SS Body Bolt	4	
11	V10118	5/16" SS Lock Washer	4	
12	V10119	5/16" SS Nut	4	
13	V10020A	#10 x 3/4" SS Handle Bolt	1	
14	V07021A	SS Handle Washer	1	
15	V10163*	FKM (viton type) Stem O-Ring	1	
N/S	V10200	Repair Kit	1	
N/S	V10270	Straight Mounting Bracket	1	
N/S	V10271	90° Mounting Bracket	1	

REPLACEMENT PARTS V125FP-V150-V200				
ITEM	PART NO	DESCRIPTION	QTY	
1	V20151M	Stem	1	
2	V20153	Handle	1	
2	V20353T	T Handle	1	
N/S	V20353C	1 1/8" Plug for T-Handle (Cap Plug)	1	
3	V20254	Valve Body	1	
4	V20255A*	Valve Ball	1	
5	V20256	2" End Plate	2	
5	V20257	1 1/2" End Plate	2	
5	V20267	1 1/4" Full Port End Plate	2	
6	V20258A*	Ball Seat	2	
7	V20264*	FKM (viton type) Valve Body O-Ring	2	
8	V20159*	Upper Stem Bushing	1	
9	V20060*	Thrust Washer	1	
10	V20017	3/8" x 4" SS Body Bolt	4	
11	V20018	3/8" SS Lock Washer	4	
12	V20019	3/8" 16 SS Hex Nut	4	
13	V20020	1/4" x 1/2" SS Handle Bolt	1	
14	V20021	SS Handle Washer	1	
15	V20163*	FKM (viton type) Stem O-Ring	1	
N/S	V20200	Repair Kit	1	



DIMENSION CHART IN INCHES (REFER TO DRAWING ABOVE)						
PART NO	DESCRIPTION	A	B	C	D	E
V050	Full Port Valve	3.44	3.37	2.06	1.25	2.50
V075	Full Port Valve	3.44	3.37	2.06	1.25	2.50
V100	Standard Port Valve	3.44	3.37	2.06	1.25	2.50
V100FP	Full Port Valve	4.19	3.31	2.44	1.81	3.50
V125	Standard Port Valve	4.19	3.31	2.44	1.81	3.50
V125FP	Full Port Valve	4.72	5.90	2.70	1.92	3.50
V150	Full Port Valve	4.72	5.90	2.70	1.92	3.50
V200	Standard Port Valve	4.72	5.90	2.70	1.92	3.50

*Valve repair kits contain items marked with asterisk :
 1 Ball 2 Body O-Rings 1 Thrust Washer
 2 Ball Seats 1 Upper Stem Bushing 1 Stem O-Ring