

2" Full Port Polypropylene Bolted Ball Valves

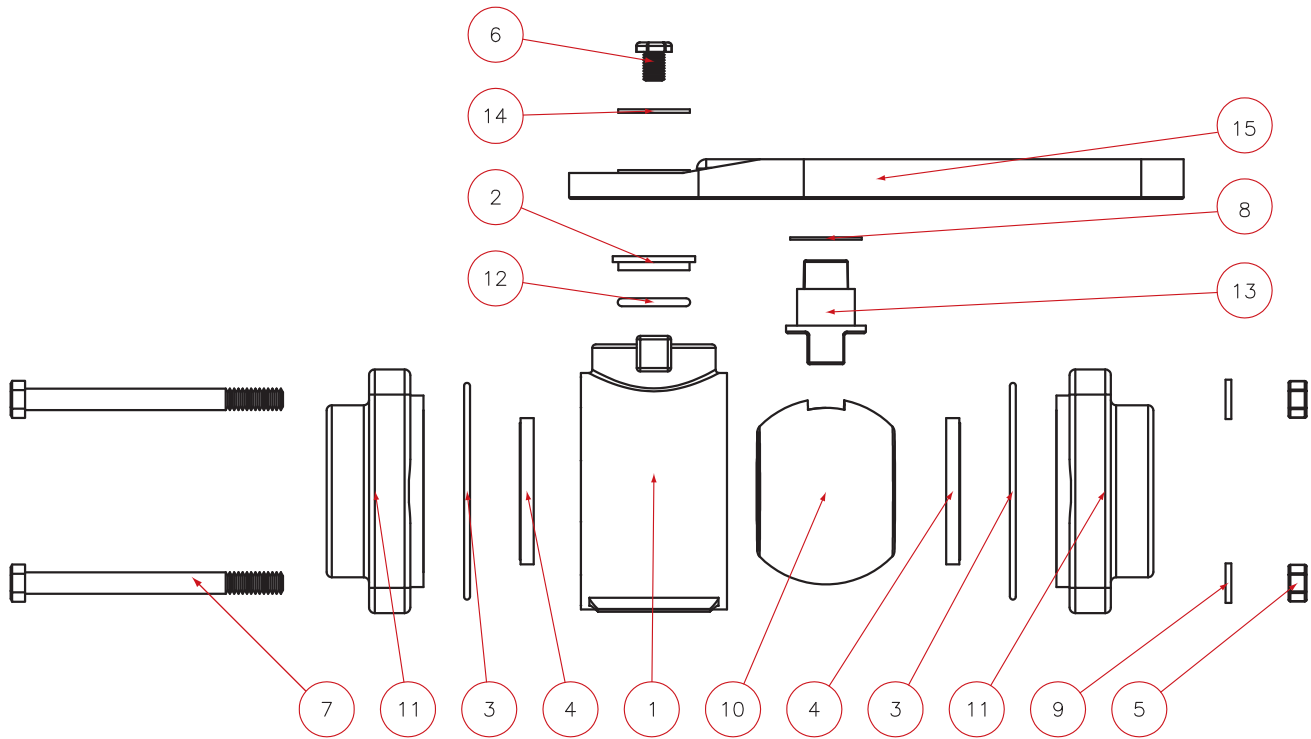
FEATURES

- FKM (viton type) seals.
- Stainless steel bolts.
- PTFE self-lubricating stem bushings and seats cannot stick or bind.
- Precision molded in polypropylene.
- Polypropylene is reinforced with fiberglass for additional strength.
- Self-aligning ball moves freely against the PTFE seats for smooth operation.
- Valve opens and closes with very little pressure on the handle.
- Ball is diamond turned, after molding, to make it spherically perfect, which provides precise contact between ball and seats.
- Maximum operating pressure 150 P.S.I. @ 70°F & 75 P.S.I. @ 150°F.



4 BOLT FULL PORT VALVES					
PART NO	DESCRIPTION	MAX PSI	PIPE SIZE	OPENING THRU BALL	QTY
V204FP	2" Full Port Valve	150	2"	2"	8/box
VFMT204FP	2" Full Port Valve Male NPT x Male Adapter	150	2"	2"	6/box





VALVES

REPLACEMENT PARTS VFMT204FP				
ITEM	PART NO	DESCRIPTION	QTY	
1	V25254	2" FP Valve Body	1	
2	V25160	Upper Stem Bushing	1	
3	V25264	FKM (viton type) Body O-Ring	2	
4	V25258A	2" FP Ball Seat	2	
5	V20019	3/8" 16 SS Hex Nut	4	
6	V25020	3/8" x 1/2" Handle Bolt	1	
7	V25017	3/8" x 4 1/2" SS Body Bolt	4	
8	V25060	Thrust Bushing	1	
9	V20018	3/8" SS Lock Washer	4	
10	V25255A	2" Ball	1	
11	VF25356	2" End Plate Male Adapter	1	
11	VMT25356	2" MPT End Plate	1	
12	V25163	FKM (viton type) Stem O-Ring	1	
13	V25151B	Stem	1	
14	V25121	Handle Washer	1	
15	V25153	Handle	1	

REPLACEMENT PARTS V204FP				
ITEM	PART NO	DESCRIPTION	QTY	
1	V25254	2" FP Valve Body	1	
2	V25160	Upper Stem Bushing	1	
3	V25264	FKM (viton type) Body O-Ring	2	
4	V25258A	2" FP Ball Seat	2	
5	V20019	3/8" 16 SS Hex Nut	4	
6	V25020	3/8" x 1/2" Handle Bolt	1	
7	V25017	3/8" x 4 1/2" SS Body Bolt	4	
8	V25060	Thrust Bushing	1	
9	V20018	3/8" SS Lock Washer	4	
10	V25255A	2" Ball	1	
11	V25456	2" Full Port End Plate	2	
12	V25163	FKM (viton type) Stem O-Ring	1	
13	V25151B	Stem	1	
14	V25121	Handle Washer	1	
15	V25153	Handle	1	