

# HYPRO® NOZZLES

## ULTRA LOW-DRIFT SPRAY NOZZLES

### DRIFT-REDUCING AIR-INDUCTION NOZZLES

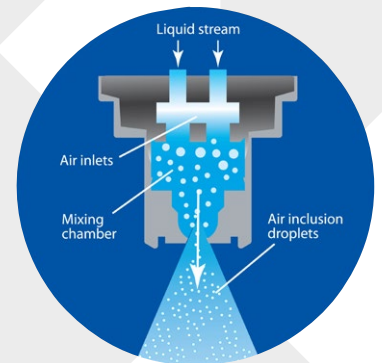


### FEATURES & BENEFITS

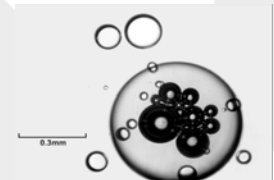
Use Ultra Low Drift nozzles when drift reduction is the priority.

Enables spraying in the widest weather window. Suitable for spraying soil acting herbicides, glyphosate and systemic fungicides. Not recommended for grass weed herbicides or potato blight fungicides.

- Large air-filled droplets with fewer fine droplets to reduce spray drift compared to standard flat fan nozzles
- Reduce potential for spray drift where a buffer zone is required such as spraying near to organic or sensitive crops and residential areas
- Wide 120° spray angle means boom height can be lowered to further decrease drift
- Small, compact nozzle size reduces the chance of accidental breakage
- Operates at standard boom pressures
- Two piece design – splits open for easy cleaning
- Available sizes 015 to 08 with ISO standard colours
- Fit all standard caps and Hypro TwinCap™
- Precision moulded in tough and durable polyacetal



Patented dual-air induction technology makes coarser air-filled droplets that show good retention on leaf surfaces



Large air-filled droplets

3 sizes approved for spraying field crops:



- Size 03: 50% drift reduction at 2.5 to 8 bar
- Size 04: 90% drift reduction up to 2.5, 75% reduction 3 to 8 bar
- Size 05: 90% drift reduction at 2.5 to 8 bar

# HYPRO® NOZZLES

## ULTRA LOW-DRIFT SPRAY NOZZLES

### PERFORMANCE INFORMATION

#### PART NUMBER: ULD120-015

Nozzle	Bar	Flow		Litres/hectare @ Km/h							ASABE Spray Quality
		L/min		6	8	10	12	14	16	18	
015	2	0.490	98	73	59	49	42	37	33	XC	
	3	0.600	120	90	72	60	51	45	40	VC	
	4	0.693	139	104	83	69	59	52	46	C	
	5	0.775	155	116	93	77	66	58	52	C	
	6	0.849	170	127	102	85	73	64	57	M	
	7	0.917	183	137	110	92	79	69	61	M	
	8	0.980	196	147	118	98	84	73	65	M	

#### PART NUMBER: ULD120-04

JKI Approved with 90% Drift Reduction up to 2.5 Bar

Nozzle	Bar	Flow		Litres/hectare @ Km/h							ASABE Spray Quality
		L/min		6	8	10	12	14	16	18	
04	2	1.306	261	196	157	131	112	98	87	UC	
	3	1.600	320	240	192	160	137	120	107	UC	
	4	1.848	370	277	222	185	158	139	123	XC	
	5	2.066	413	310	248	207	177	155	138	XC	
	6	2.263	453	339	272	226	194	170	151	VC	
	7	2.444	489	367	293	244	209	183	163	C	
	8	2.613	523	392	314	261	224	196	174	C	

#### PART NUMBER: ULD120-02

Nozzle	Bar	Flow		Litres/hectare @ Km/h							ASABE Spray Quality
		L/min		6	8	10	12	14	16	18	
02	2	0.653	131	98	78	65	56	49	44	XC	
	3	0.800	160	120	96	80	69	60	53	C	
	4	0.924	185	139	111	92	79	69	62	C	
	5	1.033	207	155	124	103	89	77	69	M	
	6	1.131	226	170	136	113	97	85	75	M	
	7	1.222	244	183	147	122	105	92	81	M	
	8	1.306	261	196	157	131	112	98	87	M	

#### PART NUMBER: ULD120-05

JKI Approved with 90% Drift Reduction at 2.5 to 8 Bar

Nozzle	Bar	Flow		Litres/hectare @ Km/h							ASABE Spray Quality
		L/min		6	8	10	12	14	16	18	
05	2	1.633	327	245	196	163	140	122	109	UC	
	3	2.000	400	300	240	200	171	150	133	XC	
	4	2.309	462	346	277	231	198	173	154	XC	
	5	2.582	516	387	310	258	221	194	172	VC	
	6	2.828	566	424	339	283	242	212	189	VC	
	7	3.055	611	458	367	306	262	229	204	C	
	8	3.266	653	490	392	327	280	245	218	C	

#### PART NUMBER: ULD120-025

Nozzle	Bar	Flow		Litres/hectare @ Km/h							ASABE Spray Quality
		L/min		6	8	10	12	14	16	18	
025	2	0.816	163	122	98	82	70	61	54	XC	
	3	1.000	200	150	120	100	86	75	67	C	
	4	1.155	231	173	139	115	99	87	77	C	
	5	1.291	258	194	155	129	111	97	86	M	
	6	1.414	283	212	170	141	121	106	94	M	
	7	1.528	306	229	183	153	131	115	102	M	
	8	1.633	327	245	196	163	140	122	109	M	

#### PART NUMBER: ULD120-06

Nozzle	Bar	Flow		Litres/hectare @ Km/h							ASABE Spray Quality
		L/min		6	8	10	12	14	16	18	
06	2	1.960	392	294	235	196	168	147	131	UC	
	3	2.400	480	360	288	240	206	180	160	XC	
	4	2.771	554	416	333	277	238	208	185	VC	
	5	3.098	620	465	372	310	266	232	207	C	
	6	3.394	679	509	407	339	291	255	226	C	
	7	3.666	733	550	440	367	314	275	244	C	
	8	3.919	784	588	470	392	336	294	261	C	

#### PART NUMBER: ULD120-03

JKI Approved with 50% Drift Reduction at 2.5 to 8 Bar

Nozzle	Bar	Flow		Litres/hectare @ Km/h							ASABE Spray Quality
		L/min		6	8	10	12	14	16	18	
03	2	0.980	196	147	118	98	84	73	65	XC	
	3	1.200	240	180	144	120	103	90	80	C	
	4	1.386	277	208	166	139	119	104	92	C	
	5	1.549	310	232	186	155	133	116	103	M	
	6	1.697	339	255	204	170	145	127	113	M	
	7	1.833	367	275	220	183	157	137	122	M	
	8	1.960	392	294	235	196	168	147	131	M	

#### PART NUMBER: ULD120-08

Nozzle	Bar	Flow		Litres/hectare @ Km/h							ASABE Spray Quality
		L/min		6	8	10	12	14	16	18	
08	2	2.613	523	392	314	261	224	196	174	XC	
	3	3.200	640	480	384	320	274	240	213	VC	
	4	3.695	739	554	443	370	317	277	246	C	
	5	4.131	826	620	496	413	354	310	275	C	
	6	4.525	905	679	543	453	388	339	302	M	
	7	4.888	978	733	587	489	419	367	326	M	
	8	5.226	1045	784	627	523	448	392	348	M	

Application rates shown at 3 bar and 50 cm nozzle spacing  
To order use part numbers shown



3 sizes approved for spraying field crops:

- Size 03: 50% drift reduction at 2.5 to 8 bar
- Size 04: 90% drift reduction up to 2.5, 75% reduction 3 to 8 bar
- Size 05: 90% drift reduction at 2.5 to 8 bar



HYPRO EU LIMITED

STATION ROAD, LONGSTANTON, CAMBRIDGE, CB24 3DS UNITED KINGDOM  
TEL: +44 (0)1954 260097 FAX: +44 (0)1954 260245 EMAIL: INFO@HYPRO-EU.COM WWW.HYPRO-EU.COM

PENTAIR TRADEMARKS AND LOGOS ARE OWNED BY PENTAIR LTD. ALL OTHER BRAND OR PRODUCT NAMES ARE TRADEMARKS OR REGISTERED MARKS OF THEIR OWNERS.  
BECAUSE WE ARE CONTINUOUSLY IMPROVING OUR PRODUCTS AND SERVICES, PENTAIR RESERVES THE RIGHT TO CHANGE SPECIFICATIONS WITHOUT PRIOR NOTICE.  
© 2014 PENTAIR, LTD. ALL RIGHTS RESERVED.